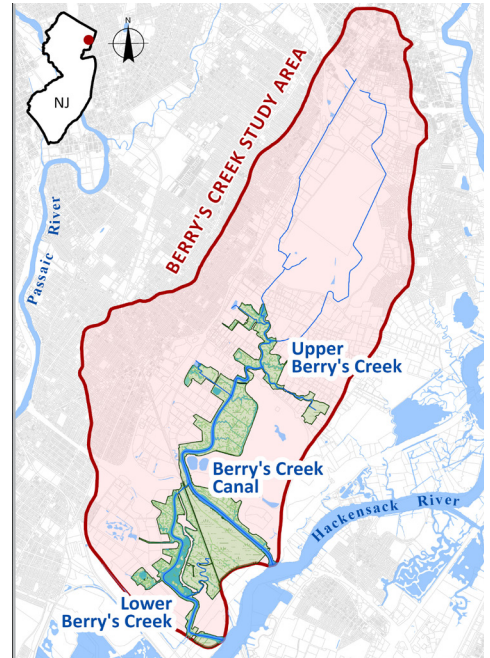


# BERRY'S CREEK

## Natural Resource Damage Assessment Plan



Spanning approximately 12 square miles in Bergen County, New Jersey, the Berry's Creek Watershed (Berry's Creek) includes Berry's Creek, its tributaries, the Berry's Creek Canal, and surrounding wetlands. Berry's Creek has and continues to provide habitat for plants and animals and support recreational activities. However, decades of contamination from three Superfund Sites have negatively impacted the natural environment of Berry's Creek. To compensate the public for these impacts, the Federal Natural Resource Trustees (the National Oceanic and Atmospheric Administration [NOAA] and the U.S. Fish and Wildlife Service [USFWS]) are conducting natural resource damage assessment and restoration (NRDAR) activities for the site.

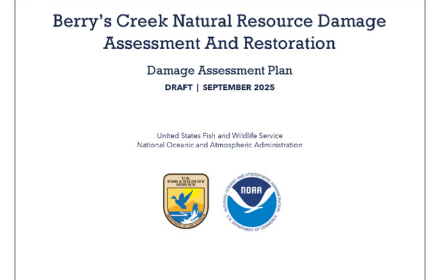
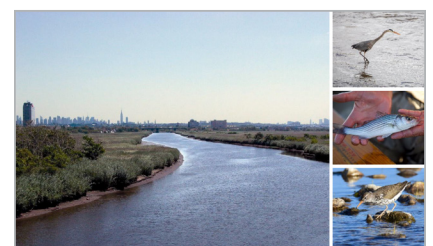


The goal of NRDAR is to compensate the public for natural resource losses.

### WHAT IS THE ASSESSMENT PLAN?

The Assessment Plan describes the Berry's Creek Natural Resource Trustees' proposed approach to conducting the NRDAR and helps the Trustees make reasonable decisions about assessment activities. This includes information on:

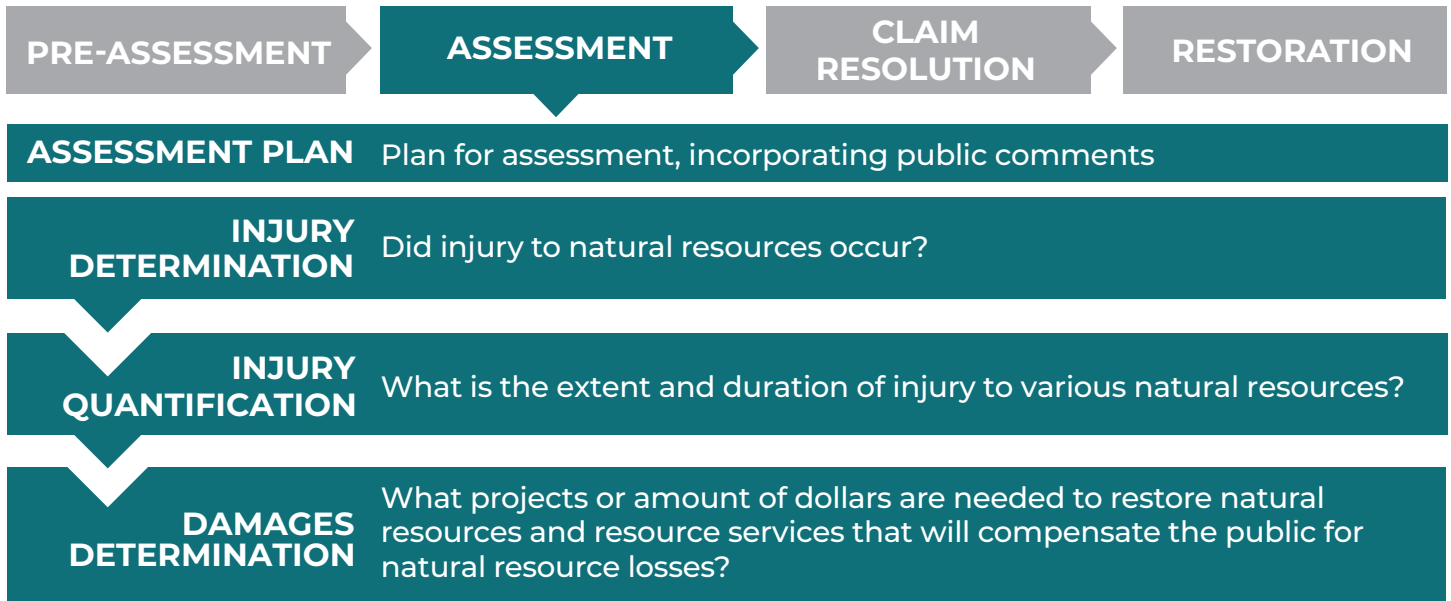
- Existing data on Berry's Creek natural resources, human uses, and contaminants.
- How the Trustees intend to coordinate with the cleanup (remedial) process and parties potentially responsible for the contamination
- Plan for communication with the public.
- Potential studies and approaches that the Trustees may use to evaluate:
  1. Contaminant effects on natural resources and the services those resources should provide.
  2. The amount of damages (projects or dollars) needed to restore injured resources and compensate the public for natural resource losses.



# BERRY'S CREEK

## Natural Resource Damage Assessment Plan

### THE NRDAR PROCESS



### WE WANT TO HEAR FROM YOU

The federal Trustees have shared the Draft Assessment Plan for the Berry's Creek NRDAR. You are encouraged to review and provide written comments on the Plan through **July 6, 2026**. Public comments received in writing by the close of the comment period will be addressed in the Final Assessment Plan.

The plan is available on Trustee websites:

**NOAA website:** <https://www.diver.orr.noaa.gov/web/guest/diver-admin-record?diverWorkspaceSiteId=6832>

**FWS website:** [https://www.cerc.usgs.gov/orda\\_docs/DocHandler.ashx?task=get&ID=12732](https://www.cerc.usgs.gov/orda_docs/DocHandler.ashx?task=get&ID=12732)

Physical copies can be accessed at:

Wood-Ridge Memorial Library  
231 Hackensack Street  
Wood-Ridge, NJ 07075

Comments may be submitted in writing to:

**Sean Bugel**  
U.S. Fish and Wildlife Service  
4 E. Jimmie Leeds Road Suite 4  
Galloway, NJ 08205  
sean\_bugel@fws.gov

