

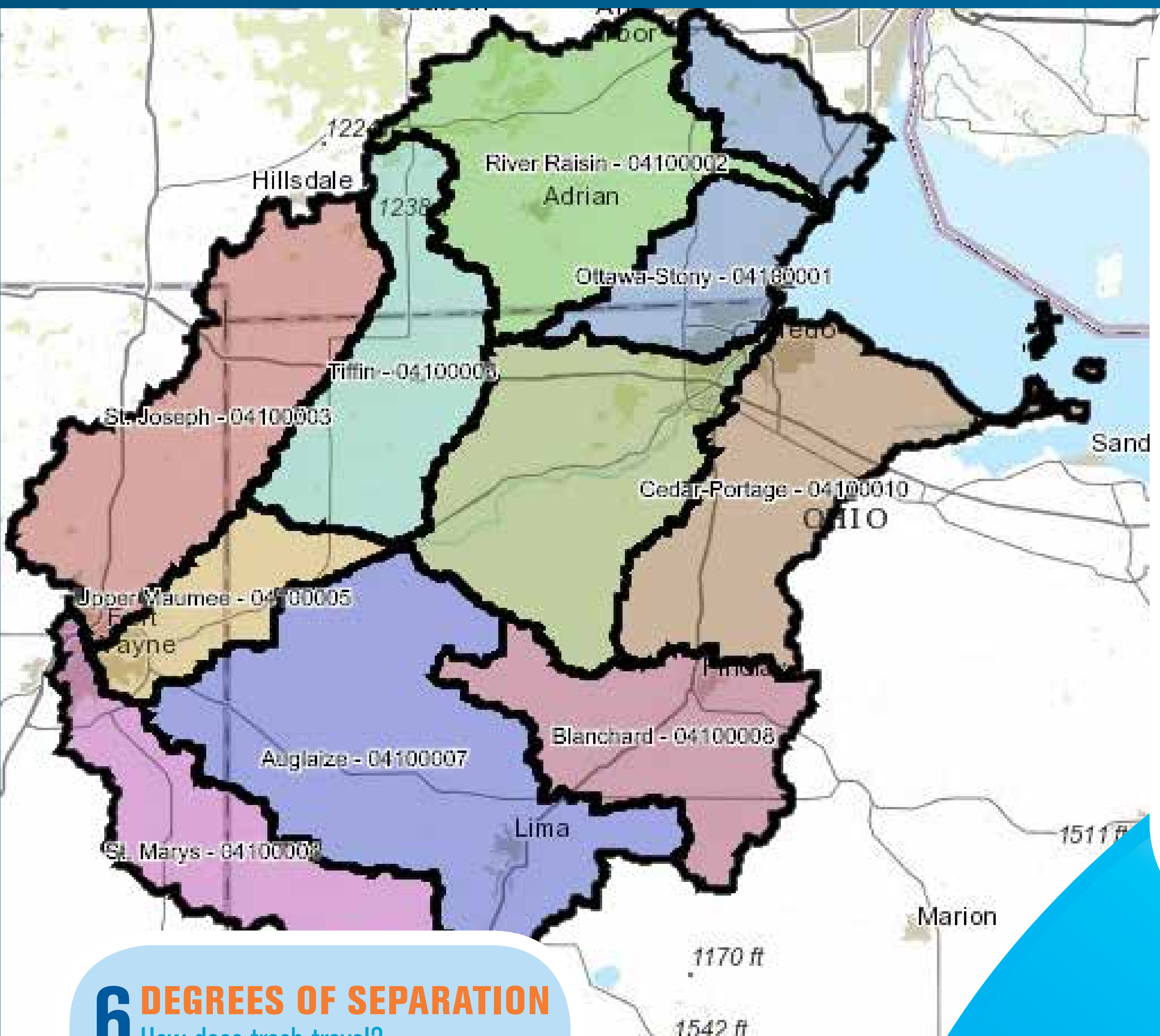
MARINE DEBRIS:

ITS JOURNEY TO LAKE ERIE



Follow Us

 @PCSMaumee



Marine Debris is "any persistent solid material that is manufactured or processed and directly or indirectly, intentionally or unintentionally, disposed of into a marine environment like our rivers, streams, and lakes."

6 DEGREES OF SEPARATION



How does it get there?

People are the source of marine debris. We create items, such as plastic bags, to benefit us. We also decide what to do with these items when we are done with them. If we aren't careful, items meant for the trash end up in our streets, parks, rivers, lakes, and eventually the ocean.

Trash is blown out of unsecured or overflowing garbage bins. It is thrown out of cars and left behind at picnics. It is even illegally dumped.

All waterways are connected – debris entering storm drains or ditches can travel to the rivers, lakes, and eventually the ocean. Even if you can't see water from where you are now, trash that you see on the ground can eventually enter the nearest waterway if it is not picked up.



Does it ever go away?

- Lifespan in the Environment:
- Cigarette Butt – up to 10 years
 - Plastic Bag – up to 20 years
 - Aluminum Can – 200 years
 - Plastic Bottle – 450 years
 - Fishing Line – 600+ years

Map Credit: Nutrient Source Inventory (Toledo Lucas County Sustainability Commission; Lucas County Commissioners; City of Toledo)

What are the negative impacts?



Marine debris most noticeably impacts wildlife and natural habitats. Both marine and land animals mistake debris as food or become entangled in it.



Marine debris also negatively impacts people. The presence of marine debris can degrade water quality, influence the local economy, and detract from the recreation and enjoyment of waterways.

What does it look like?

Top 10 Items - 2016 Clean Your Streams

- Food Wrappers (Candy, Chips, etc.)
- Cigarette Butts
- Plastic Pieces
- Foam Pieces
- Beverage Bottles (Plastic)
- Beverage Cans
- Glass Pieces
- Beverage Bottles (Glass)
- Grocery Bags (Plastic)
- Bottle Caps (Plastic)



What can YOU do?

- Cover It!**
Secure your trash using a trash can with a lid and make sure your bag is securely tied shut.
- Bag It!**
Use reusable bags when shopping, not just at grocery stores but when buying clothes, shoes, hardware or anything else that requires a bag.
- Bottle It!**
Drink tap water in a reusable bottle when on the go.
- Reuse It!**
Use reusable mugs, tableware (when away from home), packing material and gift wrap whenever possible.
- Butt Out!**
Use an ashtray so cigarette butts don't reach waterways.
- Remove It!**
Remove all tackle from waterways and use Fishing Line Recycling Bins along the river.
- Leave No Trace!**
Whenever in a park or other natural space, take all of your trash and belongings with you as you leave.
- Volunteer!**
Join PCS for a stream cleanup to take part in protecting your local waterways.
- Donate!**
Give back to local waterways by donating to PCS.
- Share It!**
Tell your friends and family about marine debris, its sources, impacts, and what we can all do to eliminate it from the environment.



Become a Partner for Clean Streams today!
Volunteer - Donate - Sponsor
 Your support will directly benefit our local waterways.

P.O. Box 203
 Perrysburg OH 43552
 (419) 874-0727 (phone + fax)
www.PartnersforCleanStreams.org
PCS@PartnersforCleanStreams.org

Funding Provided By:



This institution is an equal opportunity provider. The views and conclusions contained in this document are those of the authors and should not be interpreted as representing the opinions or policies of the U.S. Government or the National Fish and Wildlife Foundation and its funding sources. Mention of trade names or commercial products does not constitute their endorsement by the U.S. Government, or the National Fish and Wildlife Foundation or its funding sources.